

**THEME:  
AUSTRALIA,  
BRAZIL,  
HONG KONG & UAE**

**FORTHCOMING EXHIBITIONS**



**BIG 5 - Dubai**  
STEMA/PEDAX will participate in the annual Big 5 show, which takes place in November 23<sup>rd</sup>-26<sup>th</sup> 2009 in Dubai. Once again you can find us in the German Hall, where we will present you all the latest news from STEMA/PEDAX as well as some of the latest big projects in the region; e.g. Al Raha Beach in Abu Dhabi. We look forward to welcoming you at our stand **Zabell Q123**.



**ConBuild 2009 - Vietnam**  
STEMA/PEDAX will be participating at the Conbuild Vietnam in Ho Chi Minh City. The exhibition takes place in the days December 1st to 4th 2009. We are looking forward to seeing you at our stand **1027 in hall A1** together with our Vietnamese agent Nhat Cuong Co., Ltd. and our strategic partner Schlatter Industries AG.



**WOC 2010 - USA**  
At WOC 2010 in February 2nd to 5th in Las Vegas we will display a **Mafix KS 3000** and a **Perfect 70 CC**. You can find us together with our North American agent Schlatter North America at our **Stand N2737**.



**The Precast Show 2010 - USA**  
The next Precast Show will take place in Phoenix, Arizona in the days February 18th to 20th. You will find us with our North American agent Schlatter North America at our **stand 1143**.



**Wire Düsseldorf, Germany** takes place in the days April 12th-16th, 2010. Please come and visit us in **hall 11, stand A06**.



**BAUMA 2010** in Munich, Germany takes place in the days April 19th-25th. We are looking forward seeing you in **hall C3, stand 305/405; 502/505; 407/504**.

## ARC in Brisbane

- Most safe and efficient rebar shop in Australia



ARC's P1, Project One

■ Ulrich Deichmann,  
Jan H. Nielsen

Or maybe in the world. ARC, former Smorgon Steel in Australia, had a vision to build a modern, efficient and safe rebar shop, with the first discussions with potential suppliers started in 2004. STEMA/PEDAX was quite early selected as the preferred supplier due to our knowledge of making complete factories worldwide.

The inspiration of the layout and work process was started at a factory visit to SCR Riesa in Germany, which is one of the most efficient rebar shops in Europe, with production on average of 1 ton per man-hour and a scrap % of around 1 %. The project at ARC was named P1, Project One, with the goal and vision of reaching benchmark efficiency, just like SCR Riesa, Germany. Every market is different and the average diameter in SCR Riesa is higher than the ones used in Australia, which adds to the challenge.

It is a cornerstone of ARC's business that safety comes first, that is why the technical specification for STEMA/PEDAX was set to

include an extensive (and very technically challenging) safety system which ensured that the new factory would set a new benchmark for safety as well as efficiency. ARC set the challenge for STEMA/PEDAX to meet the requirements of the Australian standard for "Safeguarding of Machinery", going through a rigorous risk assessment process and selecting automation and systems to make use of the latest technology to reach ARC's goals. According to Scott Keating, National Engineering and Operational Excellence Manager at ARC "We are very happy with the outcome and in particular the robust way in which the safety system is integrated into the line".

Approx 20 % of the machinery investment has been put into a safety system second-to-none. The entire factory is protected with safety switches and marked zones where you can walk. This may bring inefficiency, but due to a can-bus software system where the whole safety system is connected, it takes only seconds to verify if and where a safety zone has been activated. The benefit is a safety level never seen in a rebar shop before, and we expect it

will set future standards for the Australian market.

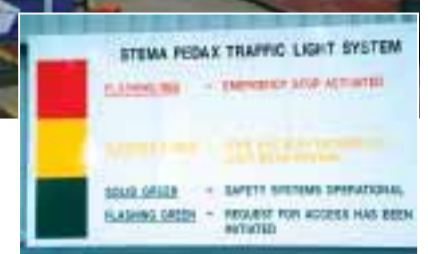
"The efficiency now after 4 months of operation is steadily improving, so we are getting there and expect to reach our goal within the first 12 months", says Kevin Goble, project manager of P1.

By September 2008 the STEMA/PEDAX service engineers had their first working day on site in Pinkenba, after they had received 36 containers with machinery.

From late September until the beginning of December 2008 the main plant was installed.

There were periods where we ultimately had 6 software engineers and 8 mechanical engineers on site at once. They spent more than 5.000 working hours in total.

The coordination of this installation project was carried out in tight cooperation with the ARC project team managed by Kevin Goble. Without the effort and help from the ARC project team who were very dedicated to make this a success, we probably wouldn't have been able to meet the deadlines.



Overview of "STEMA/PEDAX traffic light safety system"

The main installation went on until the beginning of January 2009, where test runs were performed in accordance with specifications.

In conclusion, we feel confident that the STEMA/PEDAX equipment will live up to the demands from ARC and we would once again like to thank everybody who helped us and participated in this project.

# Website

– keeps you updated

■ Camilla Nonn

STEMA/PEDAX is well aware of the importance of website organization and the clear outline of e.g. product information, to ease page navigation and access for visitors from the industry. Our four product categories are featured with technical specifications, product videos, machine layouts and a short product introduction. You also have the possibility to request a specific quotation or catalogues, or simply download catalogues.

Learn also more about the STEMA/PEDAX service features; e.g. helpline, original spare parts, on-site services or service contracts.

A new feature is the LATEST NEWS which will keep visitors up-to-date at all times, additionally the EVENT news will tell you where you can visit us at the upcoming exhibitions worldwide. You also have the opportunity to sign up for our E-Newsletter.

[www.stemapedax.com](http://www.stemapedax.com)



# Construction Investments in Brazil

■ Camilla Nonn

As of today Brazil is ranking as the 10th biggest economy in the world. Brazil is one of the four BRIC countries, comprising of Brazil, Russia, India and China. These countries are projected to dominate the global economy by 2050. The explanation for this conclusion is that these four countries hold 25% of the world's land coverage and 40% of the world's population and that their populations will rise with around 2 million people a year. Another important factor is increased mass urbanization, which again leads to a rising middle class. This will lead to a greater housing deficit and an increasing demand for better infrastructure. These are still among the biggest and fastest growing emerging markets despite the global recession which we are facing at this moment..

At the end of 2008 Brazil expected a growth of the GDP by 5% in 2009, but it has now been re-adjusted to 2,5% to 3%. It is estimated that in 2015 around 33 million people of the 210 million in total will live in either of the two major cities, Rio de Janeiro or São Paulo (the larger of the two).

Due to the 2014 World Cup Brazil and the 2016 Olympics in Rio de Janeiro is already

gearing up to face aspects of increased infrastructure needs. The government is planning to spend Euro 183 billion on infrastructure between 2008 and 2012. This amount is split between 11,5% for transport infrastructure and 54,5% for energy projects.

Interesting for Brazil is that it has one million kilometers of highway but almost 90% of these are still unpaved. Over the next 6 years the government has planned to spend Euro 20 billion on road building and improvements. Another issue is the building or enhancement of approx. 20.000 km of train tracks, and various ports will be built or enlarged along the Brazilian

coast line. At the moment six airports are under construction, and five more are being extended. At the moment São Gonçalo in Natal, which will be built by 2011 and it is expected to have a yearly capacity of 40 million passengers. To compare this number Heathrow in London have 67 million passengers annually and Gatwick has likewise 34 million.

At STEMA/PEDAX we think it is a major business opportunity and we have high expectations to the Brazilian market for our reinforcing steel processing machines.



Buildings under construction in São Paulo

# Smallest Member of the Twinmaster Series

■ Henrik Rantzow

We wish to welcome a new member to the Twinmaster family: the Twinmaster 8 S. After high demand from customers around the world we have developed a new

stirrup bender for the smaller diameters. The Twinmaster 8 S is capable of producing double-wire from 4 to 6 mm and single-wire from 4 to 8 mm.

The "8" is fully electric with servomotors from Bosch-

Rexroth. The same high quality components that have made the Twinmaster 12 and 16 successful around the world are integrated in this new model. Our engineers have succeeded in making the feeding and bending speed just as fast as in



the Twinmaster 12. The bending speed moves along at an amazing 1500° / sec.

The Twinmaster 8 S was first intended for the South American market where small diameters are common, but we have already received an overwhelming interest from customers from around the world. Interest has been especially high amongst pre-fabricators and large C&B shops that need a dedicated machine for their smaller diameters.

We hope you find a place for the Twinmaster 8 in your production, as a debut machine or as a complement to your existing off-coil machines.



Twinmaster 8 S, fast and excellent price-performance ratio

## Mafix mesh cutting and bending machines

# STEMA/PEDAX Offers a Complete New Range

■ Rolf Klein

STEMA/PEDAX has modified its range of machines and equipment for processing these meshes to meet modern requirements, and has revised the range of Mafix products. The machines have been designed to reliably achieve the necessary cutting, bending and transport performance.

The range includes new Mafix cutting machines with an electro-mechanical cutting head, hydraulically driven guillotine shears, electro-mechanically driven mesh bending machines, mesh feeding machines for handling with only one person, measuring and take-off systems, as well as transport.

### Mafix KS cutting machine

Powerful cutting machines, matched to the new size of stock reinforcing meshes, with a strong machine frame and a modern, movable cutting head, with holding clamps across the full cutting width and with plastic rails providing secure clamping of the reinforcing steel meshes. Electromechanical drive.

High quality cutting tools in STEMA/PEDAX quality for long life, usable on both sides. Very maintenance friendly.



Mafix KS cutting machines for reinforcing steel meshes

Available with 2500, 3000 or 6000 mm cutting width.

### Mafix MS guillotine shears with hydraulic drive

Strong and robust, welded steel construction. Fixed beam cutter, screwed to the shear stand to form an open portal. Exact guide plates for the beam cutter. Reliable hydraulic drive using two hydraulic cylinders; integrated hydraulic unit; oil included. Spring-loaded chain guide covering the cutting width.

High-quality STEMA/PEDAX blades; each 500 mm long, each with two cutting edges. Support table and protective

grids on both sides as standard!

### Mesh bending machines

The range includes Mafix MBM bending machines with a particularly strong and simple design. They are electro-mechanically driven by highly powered gear motors. Bending angles are adjusted by a simple bending cam, making them extremely easy to operate.

Mafix bending machines are available in three working width sizes of up to 2500, 3000, or 6000 mm, and are suitable for use outdoors, on a building site, as a production machine in rebar shops, and

particularly for factories making pre-cast concrete units.

### Transporting and handling meshes

The handling of heavy, large-dimension reinforcing steel meshes is significantly easier and faster with the use of roller conveyors, stop systems, lifting tables and Mafix feeding and discharge machines. Hard physical work has been eliminated.

### Mafix Z feeding machines have:

a mesh mounting bracket with hydraulic lifting device  
a feed roller bed,  
a foot switch control for forwards – hold – return with emergency stop function. They are built around a robust frame construction.



Mafix MS Guillotine shears for reinforcing steel meshes

## Automatic processing of concrete reinforcing steel Autender M and S

■ Rolf Klein

Concrete reinforcing steel is – and will remain – a commodity, whose purchasing price can change quickly and unexpectedly. Price changes over the last two years have made this very clear. The rebar shop must face up to this price pressure. Since there is barely any difference worth mentioning in the quality of the finished product, the cut and bent steel, very few options are open to a supplier who wants to stand out from the competition.

STEMA/PEDAX has dealt with the flow of material in rebar factories for many years.

The highly work-intensive processes that present severe physical challenges to the operatives are at present the subject of in-depth review. By the new brand name Autonomic, STEMA/PEDAX is marketing interesting methods of automating and simplifying the working process.

### Autender S - Automatic bar cutting system

A stationary shearline, consisting of a mobile stock unit, a powerful drawing, measuring and cutting head, and a distribution system has been fitted with an Autender S. It automatically counts and

withdraws the bars that are to be cut from the moveable stock unit and places them in the mouth of the cutting system. The cutting and sorting process takes place automatically, without manual intervention. Residues and scrap are also carried away from the working area, and are either automatically collected and stored or, in the case of scrap, taken to appropriate scrap containers.

The Autender system is designed to exploit the maximum cutting capacity. Production data can of course

be downloaded to the system directly from the company's data system, and possible malfunctions can be corrected quickly. The Autender S system is connected with the cutting head of the stationary or mobile bar shearing unit of either our Combi-line or Metax, guaranteeing high effectiveness at the same time with significantly reduced staffing.

### Autender M for high-throughput shearlines

Cadormatic high-throughput shearlines from STEMA/PEDAX are available



Autender M



in different sizes and with cutting widths of 300, 500 or 600 mm, and are amongst the most modern and powerful installations of this type. The Autender M was designed for these plants, but can of course in principal be installed at any shearline of STEMA/PEDAX. It moves transversely over a special storage rack of reinforcing steel bar material like a portal crane, automatically picks up the bar material that are to be cut, counts it, and takes it to the shearline. The supply of material to the shearline is thus automatic. Load is taken of the operating staff, in addition to which a much larger material storage can be used, where all the required reinforcing steel diameters are available in a range of lengths.

In addition to the high flexibility, the non-productive time necessarily of loading new bundles of reinforcing steel is reduced to a level not known in the past.

The maximum efficiency is achieved when all the production equipment in the rebar factory is suitably interconnected, and when appropriate buffer elements are included to minimize idle time.

And there are ways of doing this that can be applied now.

# Pilemaster II 3000

■ Per Meincke

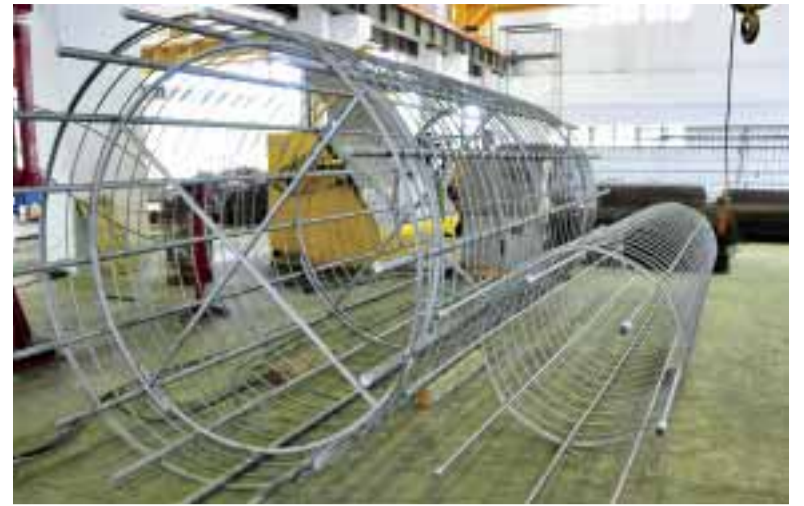
In April 2009 STEMA/PEDAX installed the largest automatic pile cage machine ever built. The new Pilemaster II 3000 was installed at Golik Metal Industrial Co. Ltd.

The Pilemaster II 3000 features an extremely robust design for the automatic manufacture of pile cages in the sizes from Ø 1000 mm to Ø 3000 mm. A double welding head system ensures accurate and strong welding of the longitudinal bars up to Ø 50 mm. The welding system also allows for automatic welding of parallel longitudinal bars.

**Short description of Golik**  
Golik opened its doors to business in 1977 primarily as a welded wire reinforcement manufacturer in Hong Kong. Over the years, the company grew in size and in market share to become one of the major suppliers and manufacturers of welded mesh in Hong Kong. Along the way, the group diversified into various industries in mainly the construction material sector to now include the supply and manufacture of ready mix concrete, concrete pipes, pc strands, lift cables, steel wire processing, coil processing and so forth for both

the domestic and mainland market. Furthermore, Golik is also a major rebar stockist in Hong Kong. To further add value to the supply chain of rebars in Hong Kong, the group has initiated a steel processing centre at its Tai Po operation to handle all pre-fabricated reinforcement such as welded mesh, cut and bend bars and pile cages.

**The Hong Kong market for pile cages in general**  
In foundation designs where pile cages are used, it is not uncommon to find large diameter bored piles specified to handle the design loads for the subsequent tall structure built



Amazing size difference in the pilecages produced



First Pilemaster II – 3000 worldwide is in Hongkong

above ground level. Like traditional manual steel fixing of other elements of a building, pile cages are also manually put together onsite in most cases. In comparison to our welded pile cages, our cages offer better productivity and greater consistency in quality.

Just as important for us as our customers is material traceability via the cast management module for total product confidence.

Golik Metal Industrial Co. Ltd wishes to cover the Hong Kong market demands for pile cages as well as cut and bend and simultaneous with the installation of the Pilemaster II 3000, a complete Cadormatic RS 500 automatic cutting line with integrated Permatic 60 N and single bending line Perfekt 50 CC, was installed by STEMA/PEDAX.

**The reason for choosing STEMA/PEDAX and the machines in question**  
Certainly there is the know-how and reliability component considered, but equally important is the comfort of knowing that there is solid technical support available at the other end of the line. As a steel service centre starting from ground-zero it was also important to minimize the 'fuss' and to have it bundled with an industry leading software supplier to handle all the production aspects from online downloading in the back office through to delivery control.

## Automatic cutting and bending equipment Metamatic



■ Rolf Klein

The new Metamatic is a fully automatic bending and shearing centre for reinforcing steel from bars. The system operates like a stirrup bender and is only supervised by one operator.

The Metamatic consists of: a cross-moving storage trolley, bar feeding and bending unit, fitted with an Autender SX automatic counting and feeding unit which automatically withdraws reinforcing steel from the mobile storage trolley and places it into the feeding device.

The Metax feeding system, which has proven itself as shearing equipment for bars since 1982, operates economically, accurately and rapidly. Measurements are taken, without the use of stops, by means of synchronously running, rubber-coated chain conveyors. This ensures reliable pulling in and non-slip transport. Furthermore this pulling unit concept also ensures no twist of the bar during processing. Drive is provided by Siemens servomotors. Robust grippers mounted to a mobile unit carry the reinforcing steel along the full



Metamatic 28

length of the collecting bench. The heavy-duty shearing machine is electrically driven, and can be lowered automatically with the pulling unit when making the second bend. The bending machine is fitted with three bending hearts dimensioned for 1 bar with diameter 28 mm, up to 2 bars with diameter 20 mm, and up to 3 bars with diameter 12 mm.

can be read directly from the label using a laser scanner, or with online communication via interface.

The new Siemens control system, with industrial PC and 15" LCD touchscreen, is very user-friendly. Production data entry is straightforward. Data

The new automatic Metamatic reinforcing steel processing center, is economical for small and medium sized rebar shops or pre-cast concrete factories who wish to work quickly and flexibly, or as express delivery unit in larger rebar shops. With a productivity between 1 and 2 tons per man-hour it is for sure a labour saving investment.

### Performance

Number of bars	3	3	3	2	2	2	1	1
Max. bar diameter with strength of 850 N/mm <sup>2</sup>	8	10	12	14	16	20	25	28

# ALAM Steel Industries – Expansion

■ Ulrich Deichmann

Alam Steel Group, one of the largest steel companies in the UAE, opened their first rebar factory in March 2007 in Dubai, equipped with 2 powerful Cadormatic 500 lines each having 2 double benders Permatic connected as well as manual bending line and pockets for straight bars, Mini-shearline for handling the off-cuts as well as 2 off-coil machines and 2 pile-cage machines all delivered by STEMA/PEDAX.

Approx. 1 year later they achieved "CARES approved" status, as the first one in the UAE, and had reached the target of more than 14.000 tons per months. Fortunately, during the design of the factory, we ensured a provision for the expansion and in the beginning of 2008 the management of Alam Steel Industries decided to make the maximum possible expansion of further 3.500 m<sup>2</sup>.

In the new bay, we have installed properly the largest

shearline in the world, namely the new Cadormatic 600 with a shearing width of 600 mm and the capability to shear 13 x 40 mm bars at the same time. In the Cadormatic 600 line we integrated 1 Permatic 60 N and 3 Mono-Permatic as well as a large number of pockets for straight bars. At the end of the new bay five new Twinmaster 16 II, two of them with a double bending attachment and one Unicut 16 has been installed, bringing the total off-coil machines up to eight units.

In the new bay besides the Cadormatic 600 line, 2 Pilemaster's have been installed to cope with the increasing demand of pile cages in the area.

From STEMA/PEDAX side we would like to congratulate Alam Steel Industries with their expansion, bringing them up to the premium league of rebar factories in the world.

*Cadormatic line  
at Alam Steel in Dubai*



## Automatic bending of reinforcing steel

# B-Master for Higher Performance

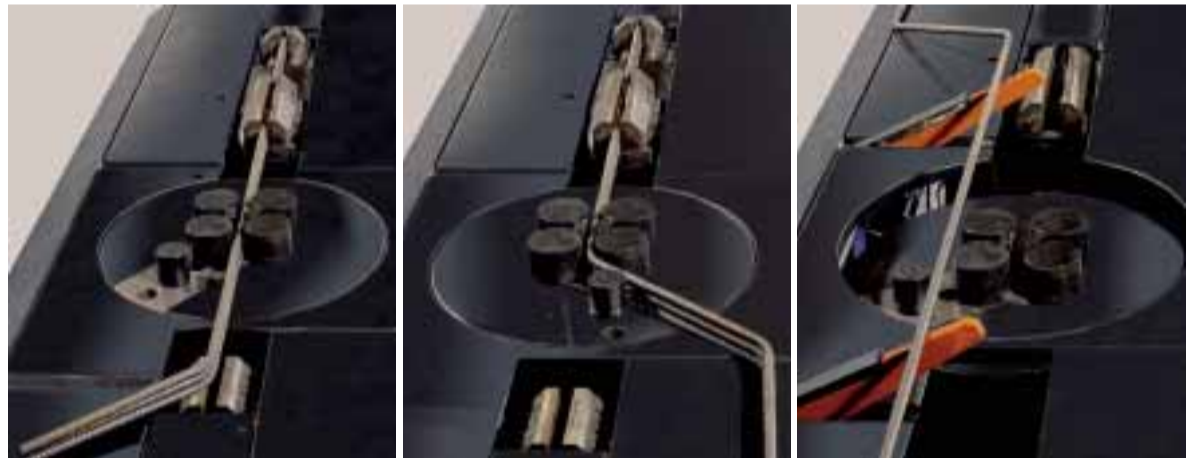
■ Rolf Klein

STEMA/PEDAX has revolutionized concrete reinforcing steel bending with the new B-Master. The new B-Master can automatically bend almost any shape of bars up to 32 mm diameter. The B-Master is integrated into the usual material flow, as found in the majority of rebar shops. Modern servo technology and professional control – both from Siemens – and intuitive user-software for fast, easy entry of just a few items of production data mean that operation is straight forward. The operator does not at any stage interrupt physically to manipulate the bending process – an important safety aspect.

Several bars can be bent simultaneously. A modern positioning system incorporates two grippers; one is in front of the bending plate, which can be lowered, and one is behind it, guaranteeing exact, high-speed positioning of the bars. Servo technology permits continuously variable regulation of the bending speed, depending on the shape. The machine's standard equipment includes bending hearts of diameters 72, 120 and 200 mm that incorporate an integrated, patented system for clamping the bars in the bending

heart. Hereby the bars to be bent are securely held in place.

The 2009 version of the B-Master has even better performance, resulting from an adapted workflow and a new support and guide system with which bars in smaller diameters can also be bent perfectly. The efficiency is significantly improved by material feed and discharge systems as well.



*The B-Master automatic bender consists of an in-feed conveyor complete with a guide-system and support rollers*



**STEMA Engineering A/S**  
Hejreskovvej 8  
DK-3490 Kvistgaard  
Denmark  
Tel. +45 4912 7912  
Fax+45 4912 7911  
E-mail: sales@stemapedax.com  
Web: www.stemapedax.com

**PEDAX Bitburg**  
Maschinenbau GmbH  
Industriestrasse 10 A  
D-54634 Bitburg  
Germany  
Tel. +49 (0) 6561 9667-0  
Fax+49 (0) 6561 9667-92  
E-mail: sales@stemapedax.de  
Web: www.stemapedax.de

**STEMA/PEDAX Poland**  
ul. Turmoncka 22/707  
PL-03-354 Warsaw  
Poland  
Tel. +48 2274 32048  
Fax+48 2274 32048  
E-mail: rs@stemapedax.com  
Web: www.stemapedax.com

**STEMA/PEDAX Middle East**  
P.O. Box 32336  
Dubai, UAE  
United Arab Emirates  
Tel. +971 4227 2760  
Fax+971 4227 2764  
E-mail: hd@stemapedax.com  
Web: www.stemapedax.com

**STEMA/PEDAX India**  
Office No:6, Yugay Mangal  
Opp. Gandhi Lawns, CDSS Road  
Erandwane, Maharashtra  
IN-411038 Pune  
India  
Mobile: +91 9225620903  
E-mail: nr@stemapedax.com  
Web: www.stemapedax.com

## Exhibitions in US and India in February 2009

■ *Camilla Nonn*

STEMA/PEDAX participated as usual in WOC - World Of Concrete - in Las Vegas, Nevada, US from February 3rd-6th. WOC is the largest trade show for the building industry in North America and was again this year very well visited, despite the present recession. STEMA/PEDAX took the opportunity to introduce Schlatter North America (former Schlatter Inc.) – our new North American agent, to existing and new

business contacts.

The main attraction was the Twinmaster 16 II, automatic stirrup bender with improved wire straightening system SRFU.

Later in February 20th-22nd, STEMA/PEDAX was also represented by Schlatter North America at the debut of "The Precast Show" in Houston, Texas, US. This trade show is tailored to precast and concrete pipe producers in a growing industry for both underground and above-ground construction.

Schlatter North America met some very interesting business opportunities, which reflects positive market trends after the economic stimulus packages have been launched in this spring.

For the first time STEMA/PEDAX participated the BMCT'09 in Pragati Maidan, New Delhi, India, February 25th-27th. More than 85 exhibitors, both local and International participated in this exhibition to display their products and solutions to the infrastructure and construction sector. The exhibition had more than 80.000 visitors worldwide and it was indeed a big event. We were joined by our strategic partner Schlatter Industries. Customers were interested especially in the Twinmaster 12 S, which is appreciated by the simultaneous technology of straightening, bending and cutting of even difficult wire in one single machine.

## Trade Shows and Fairs in Eastern/Central Europe Spring 2009

■ *Stig Gudmundsen*

The spring time is always a busy time for trade shows in Eastern/Central Europe. 2009 was no exception and until now STEMA/PEDAX has already participated in the following shows:

### Construct Expo Utilaje – Bucharest, Romania (April 1-4, 2009)

The fair was organised for the 3rd time as an independent show, aimed directly at companies in search of machinery, construction equipment and high-tech tools. The STEMA/PEDAX booth was located right in the main hall and this year we showed the Twinmaster 12 S – and automatic stirrup bending machine based on servo-technology. The machine was already sold before the show to an important construction company from Bucharest. Our strategic partner Schlatter Industries AG was also participating as our co-exhibitor. Despite some signs of crisis the show was a success and we enjoyed the visit of many new and existing customers.

### IBF Building Fair – BRNO, Czech Republic (April 21-24, 2009)

This year's BRNO Fair revealed that firms have understood that also in the present complicated period they must attend the fair and look for methods on how to support their further development. As usual, the fair was very well organised and had been prepared well in advance by our representative for Czech Republic and Slovakia – JAMI. Our booth was constantly buzzing with customers and this year we showed the Twinmaster 12 X+, a fully

automatic stirrup bending machine, working from coiled rebars in 6 – 12 mm diameter. The machine was not pre-sold, but was as expected sold during the last day of the fair to one of our existing customers, that needed this machine to upgrade his existing factory.

### Autostrada Fair – Kielce, Poland (May 12-15, 2009)

This year's Autostrada Fair was the 15th edition and the show is dedicated to all national and international companies involved in the road construction industry. Before the show we sold a Twinmaster 16 X+ as well as a Pilemaster II machine to a new customer. As this customer wished to receive the machines during the month of May, this gave us the opportunity to show the Twinmaster 16 X+, a fully automatic servo-electric stirrup bending machine at the Autostrada Fair. The show is mainly directed towards the infrastructure sector. With many new projects coming up we had a busy show with many new and existing customers visiting the STEMA/PEDAX booth.

### Wire Show – Moscow, Russia (May 12-15, 2009)

At this year's Wire Show we shared a common booth with our strategic partner Schlatter Industries AG. Our presence at the show gave us not only the possibility to meet our Russian customers on their own turf, but giving STEMA/PEDAX the opportunity to meet some new potential customers and hear about their interesting projects.



WOC 2009: (from left) Ronnie Meiers, Bruce Daniels, Norberto Donnet, Andy Kiwic, Lene Bagger-Rasmussen and Per Meincke.

## New Agent

■ *Camilla Nonn*

### Stan-Komplekt Ltd. – Kiev, Ukraine

To further increase our service and presence in Ukraine we have appointed Stan-Komplekt Ltd. as agent for STEMA/PEDAX. With 15 years of experience within sales and after-sales-services of industrial equipment, we see Stan-Komplekt Ltd. as a highly respected company, and we are looking forward to serving



The team from Stan-Kompleks with Stig Gudmundsen (in the middle) at the product training session

our existing and new customers in Ukraine.

**Contact:**  
Stan-Komplekt Ltd.  
23, Moskow Av.  
04655 Kiev, Ukraine  
Mrs Anastasiya Slipchencko

Tel: 0038044 536 04 91  
Fax: 0038044 536 04 88  
E-mail: avslip@list.ru  
Web: www.stankom.com

## New Sales Office in India

■ *Camilla Nonn*

To comply with our global strategy, we have decided to strengthen our position on the Indian market with a new sales office in Pune with Nitin Ramchandani as our new area sales manager.

Nitin Ramchandani has 3 years of experience from a



Nitin Ramchandani

similar position at a construction equipment manufacturing company. He is an electronics engineer by education.



IBF - BRNO 2009: (from left) Stig Gudmundsen, David Miazdra, R. Simon and Jan Miazdra.